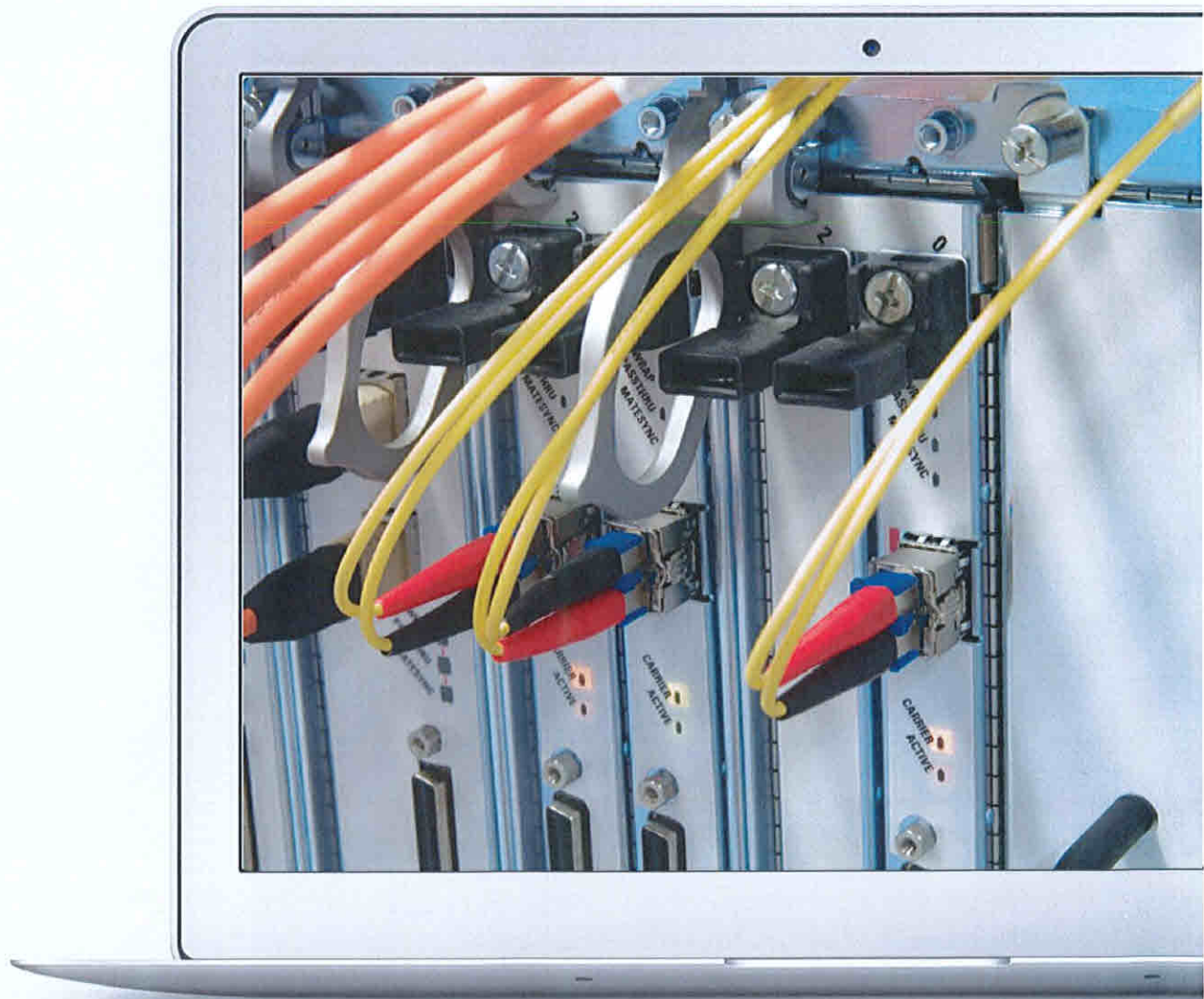
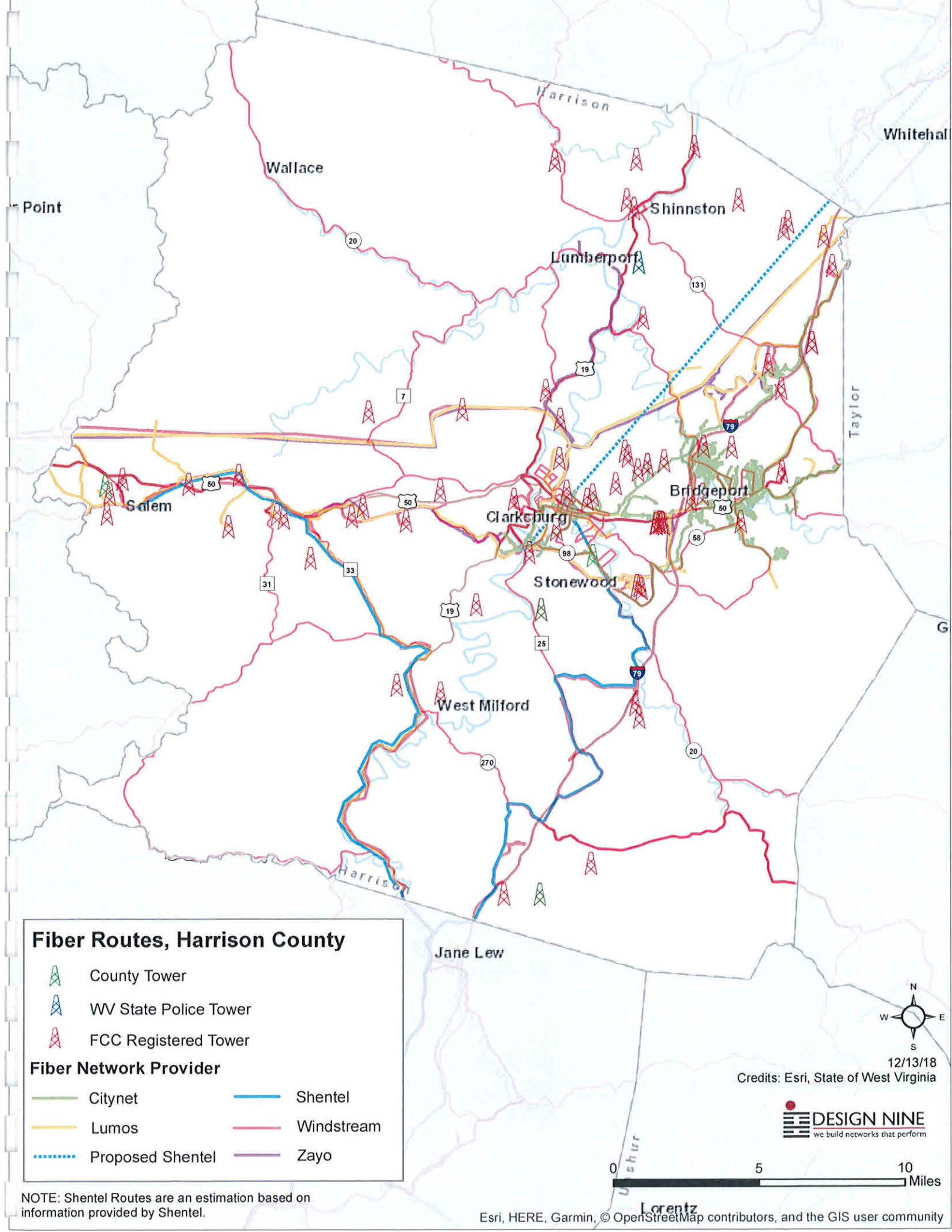


BROADBAND MAPS (INTERIM)

Region VI, West Virginia










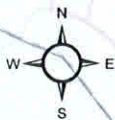
Fiber Routes, Harrison County

-  County Tower
-  WV State Police Tower
-  FCC Registered Tower

Fiber Network Provider

- | | |
|--|--|
|  Citynet |  Shentel |
|  Lumos |  Windstream |
|  Proposed Shentel |  Zayo |

NOTE: Shentel Routes are an estimation based on information provided by Shentel.



12/13/18

Credits: Esri, State of West Virginia



Speed Test Point Data Information:

Three types of point data provided by the State of West Virginia:

1. West Virginia Internet Speed Test Data
2. Self-Reported Data from a Web form on the West Virginia Speed Test Site
3. Speedtest Data that was given to West Virginia from a third party speed test site

NOTE: Point data only represents download speeds.

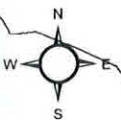
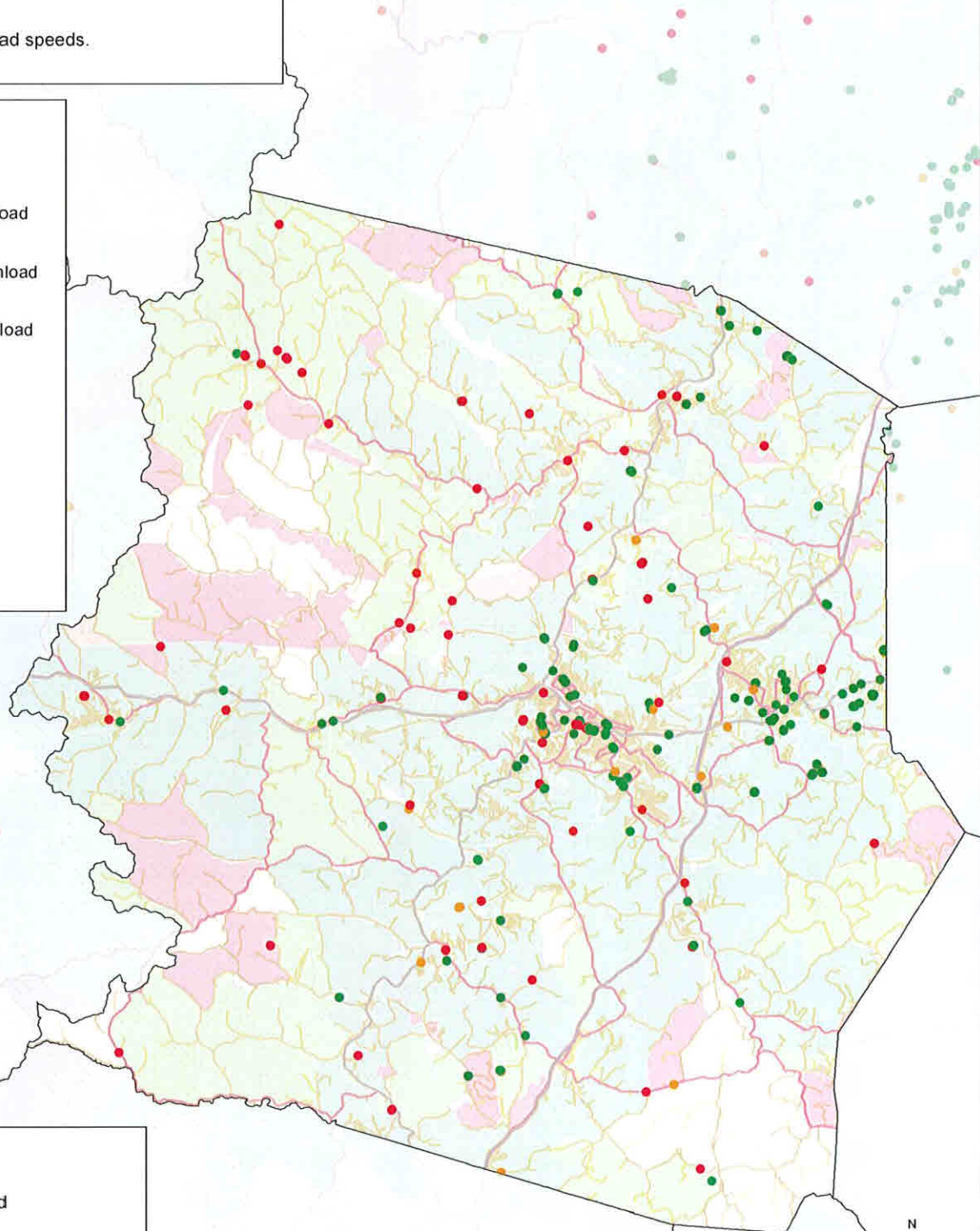
- Low Range:
Less than 4 mbps download
- Low/Middle Range:
Greater than or equal to 4 mbps download
- Middle/High Range:
Greater than or equal to 10 mbps download
- High Range:
Greater than or equal to 25 mbps download

- Interstate
- Primary Highway
- Secondary Highway
- Local Road

Census Tract Speed Map Harrison County West Virginia

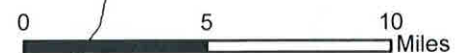
Census Tract Range:

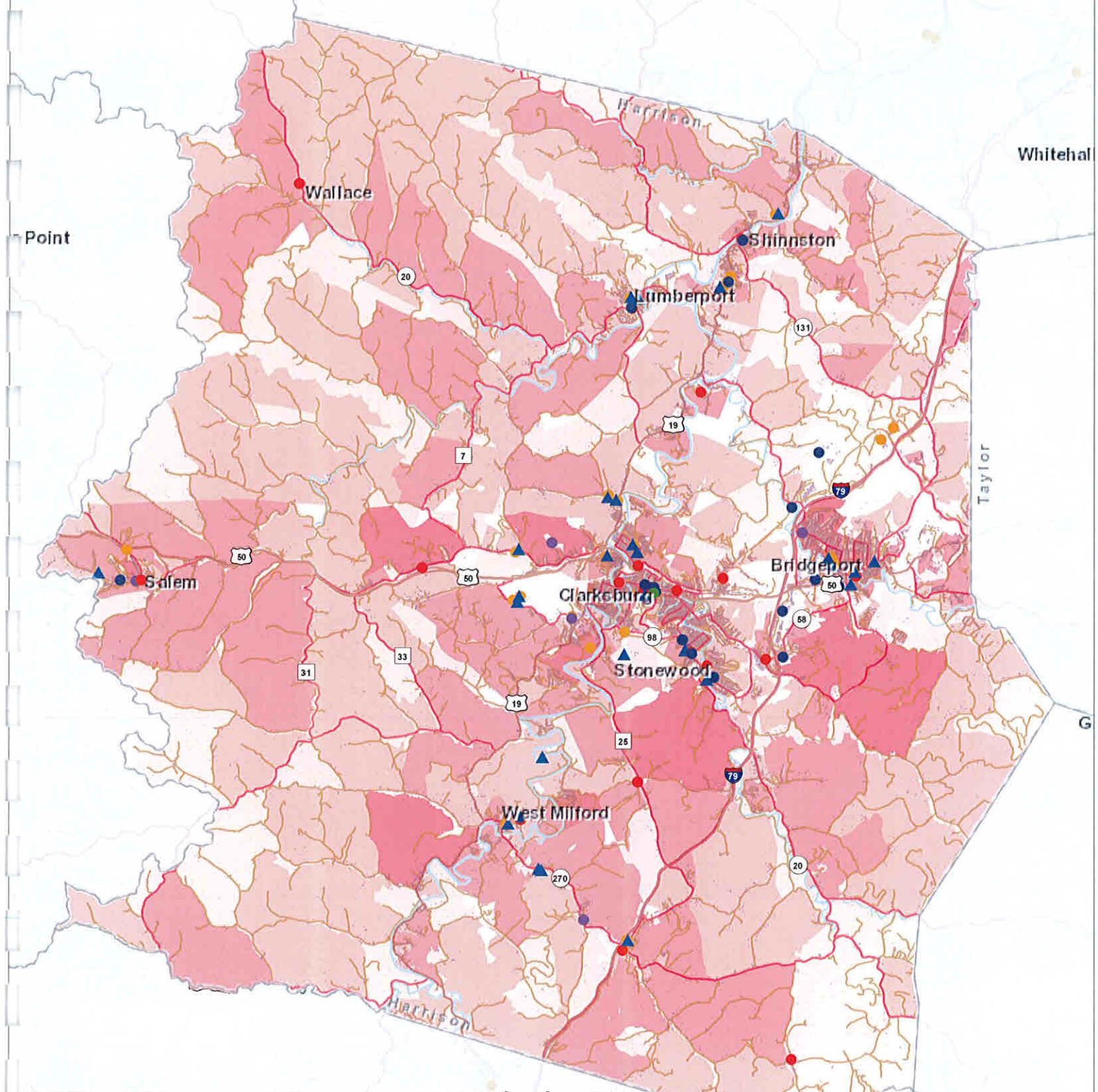
- Low Range:
Less than 4 mbps download and
less than 1 mbps upload
- Low/Middle Range:
Greater than or equal to 4 mbps download and
greater than or equal to 1 mbps upload
- Middle/High Range:
Greater than or equal to 10 mbps download and
greater than or equal to 1 mbps upload
- High Range:
Greater than or equal to 25 mbps download and
greater than or equal to 3 mbps upload



12/14/18

Credits: Esri, State of West Virginia





Points of Interest
Harrison County, West Virginia
 Population by Census Block

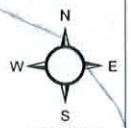
0	● Fire Department	■ Building
1 - 22	● Law Enforcement	— Interstate
23 - 90	● Library	— Primary Highway
91 - 246	▲ K12 School	— Secondary Highway
247 - 643	● County Courthouse	— Local Road
	● Public Health Facilities	

Whitehal

Point

Taylor

G



11/30/18

Credits: Esri, State of West Virginia

